



INTRODUCING OUR ALL-NEW

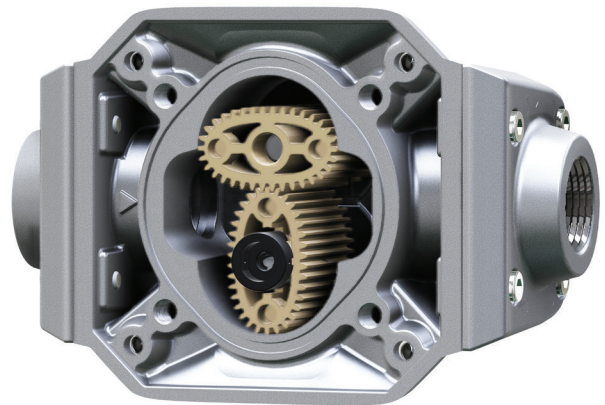
QM 150

DIESEL METERS

**4** YEAR METER WARRANTY



*Oval Gear Technology  
& A Magnetic Drive...*



*"Makes others look like  
they're just guessing"*

## EXTREME ACCURACY

*When Compared to most Nutating Disc Meters*

**HIGH PRECISION →**

**20X** More Precise at 75LPM  
**4X** Higher Accuracy:  $\frac{1}{2}\%$  Overall

**NO LEAKS → NO SEAL →**

**MAG Drive**  
Frictionless Magnetic Drive Technology

**MORE CAPACITY →**

**150LPM** vs 120LPM  
33% Higher Flow Capacity

**ACCURATE LOW END →**

**3X Better** - Accurate to **8LPM** vs **24LPM**

**LOWER PRESSURE DROP →**

**7 PSI** Pressure Drop at **150LPM**  
(And Only 1 psi at 40LPM)

**MORE FLEXIBLE →**

Versatile **Rotatable Display Mount**

**NO CALIBRATION →**

**Positive Displacement Oval Gear** Technology  
No Calibration Required



## SPECIFICATIONS

SPECIFICATIONS	BSP Model	NPT Model
Model Designation	QM150B	QM150N
Unit of Measure	Litre	
Flow Range	8 to 150 LPM	
Accuracy:	Factory Set: +1%	
	Field Set: +0.5%	
Operating Temperature	-40° to 125° F / -40° to 52° C	
Maximum Working Pressure	50 PSIG / 3.4 Bar	
Wetted Materials:		
Housing / Cover / Fittings	Aluminum	
Rotors	PPS (Polyphenylene Sulfide)	
Shafts / Strainer	Stainless Steel	
Seals	NBR (Nitrile Butadiene Rubber)	
Mag-Drive	Acetal, Stainless Steel and Neodymium (Nickel Plated)	
Inlet/Outlet Ports	1" BSPP Female (ISO228-1)	1" NPT Female
Pressure Drop (psi) - Diesel	0 @ 20 LPM 3.0 @ 75 LPM 7.0 @ 150 LPM	
Maximum Batch Total	9999.9	
Maximum Cumulative Total	99,999,999	
Technology	Positive Displacement Oval Gear	