

Cylinder pressure regulator HP 101

- dual stage in brass, nickel and matt chrome plated or stainless steel electropolished

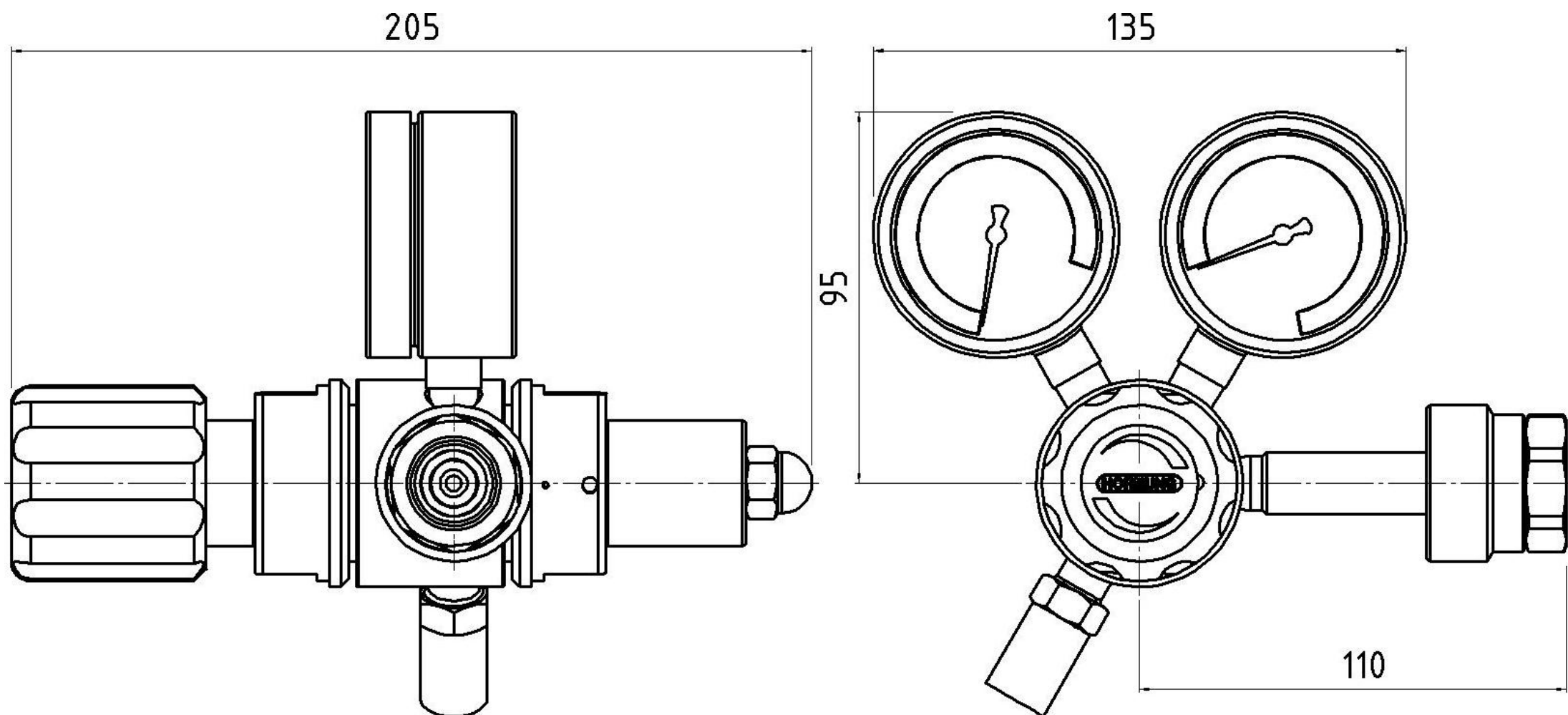


TECHNICAL DETAILS		APPLICATION AREA	DESCRIPTION
Body:	stainless steel 1.4404 electropolished or brass, nickel and matt chrome plated	Especially for gases with high requirements on purity up to 6.0 and for laboratories and analytics.	The pressure regulator HP 101 is a two stage cylinder pressure regulator and has been developed especially for the gas supply of pure and mixed gases from single cylinders.
Seat:	PCTFE	For absolutely stable working pressures. Our special cleaning system for the HP series also guarantees the use for ECD applications.	Two stage regulators will be used when a stable outlet pressure is required (even if the inlet pressure drops, discharging of cylinder).
Diaphragm:	1.4435		
Leakage rate:	10 ⁻⁸ mbar l/s He against atmosphere		
Gas purity:	≤ 6.0		The HP 101 regulator is fitted as a standard with gas specific connections to DIN 477 or any other common national standard as well as a relief valve.
Max. pressure inlet:	300 bar		
Outlet pressure ranges:	0,1-1; 1-3; 1-6; 1-12 bar		
Operating temp.:	-20°C up to +70°C		
Gauges:	safety version to EN 837-1 KL1,6		
Dimensions (wxhxd):	136 x 150 x 205 mm		
Weight:	2100 g		
Connections:	NPT 1/4" f		

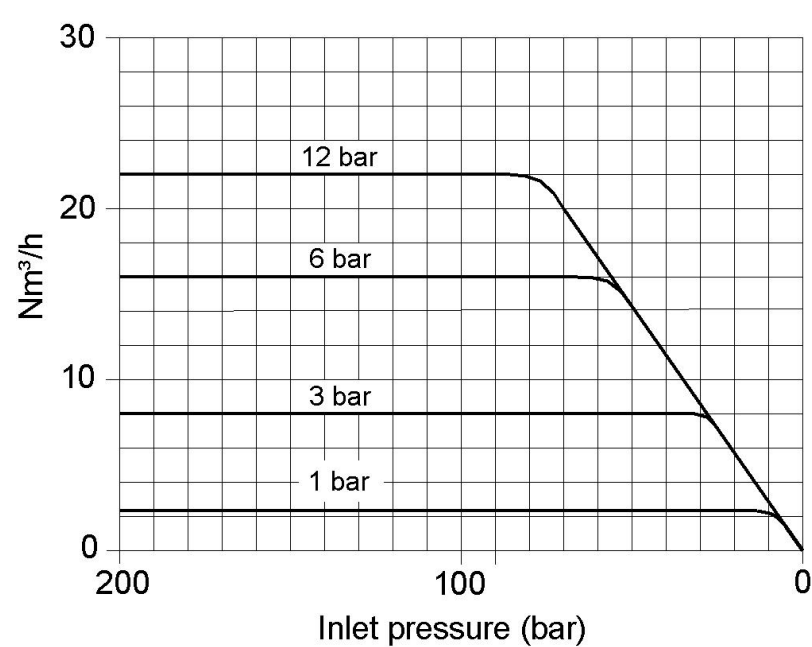
QUALITY STANDARD

The company Hornung is certified to **DIN EN ISO 9001** and **ISO 14001:2009**. All single parts are manufactured, assembled and tested by in-house production. The finished parts are therefore under all criteria of German quality control with 100% final inspection.

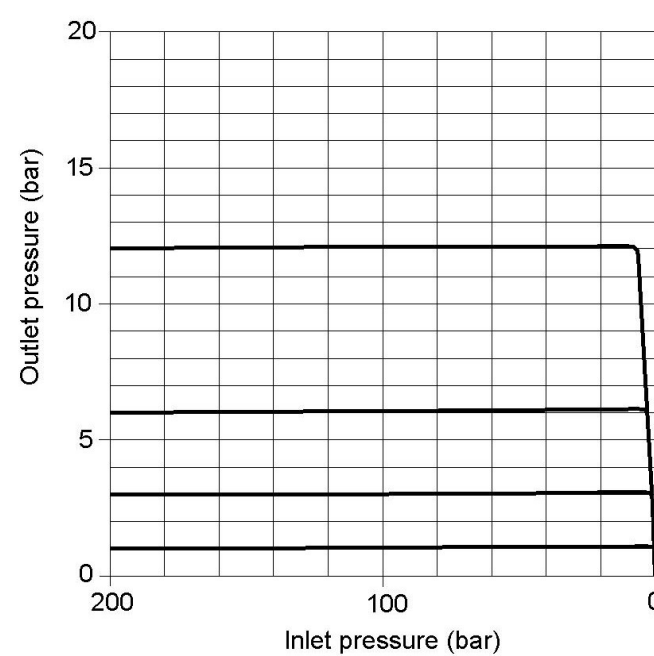
HP 101



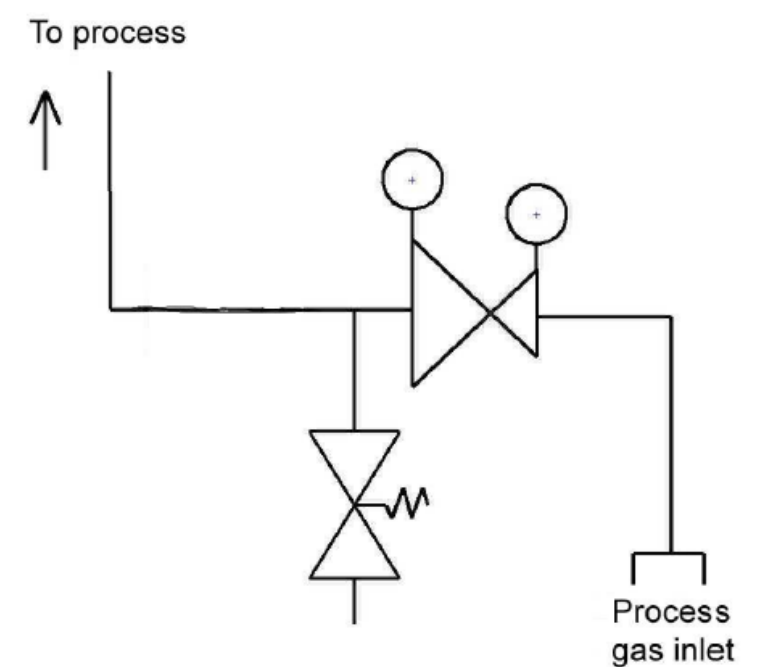
PERFORMANCE CURVE



DYNAMIC FLOW CURVE



FLOW DIAGRAM



ORDER DETAILS

Material:

- 1 = stainless steel
- 2 = brass

Inlet pressure:

- 1 = 200 bar
- 2 = 300 bar

Outlet pressure ranges:

- 1 = 0,1 - 1 bar
- 2 = 0,1 - 3 bar
- 3 = 1 - 6 bar
- 4 = 1 - 12 bar

Options for the outlet:

- 0 = 1/4" NPT - internal thread
- 1 = compression fitting 6 mm
- 2 = diaphragm shut-off valve
- 3 = diaphragm metering valve
- 4 = flowmeter

Regulator type
without purging

2-stage
67

67-
Type

1
Material

1
Inlet

2
Outlet

0
Options

Gas type
Gas type

Accessories: See total catalogue segment

- 5. Diaphragm shut-off and metering valves
- 7. Gauges, screws, compression fittings, cylinder retainers and accessories